

INVISIBLE TOUCH



Presented by Substantial Music Group LLC

Technical Rider Theatres / Performing Arts Centers

Current as of January 2025

Richard Smith Booking Phone: 678-396-0600

Email: substantialmusicgroup@gmail.com

Please Send Technical Information to:

Substantial Music Group LLC

substantialmusicgroup@gmail.com

(678) 396-0600 DIRECT

1399 Conner Street

Noblesville IN 46060

SCHEDULE

The Invisible Touch Show travels with (4) Moving Heads & (6) LED Screen Strips, (1) tech operator as well as Back line Exclusive and uninterrupted access to the stage, lighting and sound equipment, auditorium and dressing rooms/restrooms is required from the Artist's arrival until its departure. Staffing required:

1 – INVISIBLE TOUCH - Load in / Sound Check / Load out:

1.1 - Our load in and stage set up time is approximately 02 hours

1.2 - Sound Check will take approximately 02 hours

1.3 - Load out is approximately 02 hour s

1.4 - (02) Two stagehands must be present during sound check and performance

1.5 (1) rigger if theater has in house trussing to assist in r- focusing cans and fly bar hang of flex screens

1.6 (3) Stage, risers in place prior to band & crew arrival

1.7 - When above call times are not available please notify Booking director in advance

Example:

DAY OF PERFORMANCE (for a 7:00pm performance):

11am: Bandleader, and Tech operator arrive at venue with back line & LED screen equipment. (2) Hands, (2) Loaders Flyman, and (1) Arbor Loader (for Load in as required) (Flyman required for adding LED panels to battens)

Loaders are generally a flat rate and should be cut when load in is complete. Hands, flyman, arbor will be cut once all set up work is complete (likely within the 4hr min load in call)

12:00pm: Set lighting cues based on venue rep plot

2:00pm: Sound check & musician run through (4pm sound ck complete)

5:00pm (Dinner)

6:30: House opens. Performers to dressing rooms

7:00pm: Performance, 90 minutes (no intermission) Show call:

(2) Spots Operators (1) Light board operator

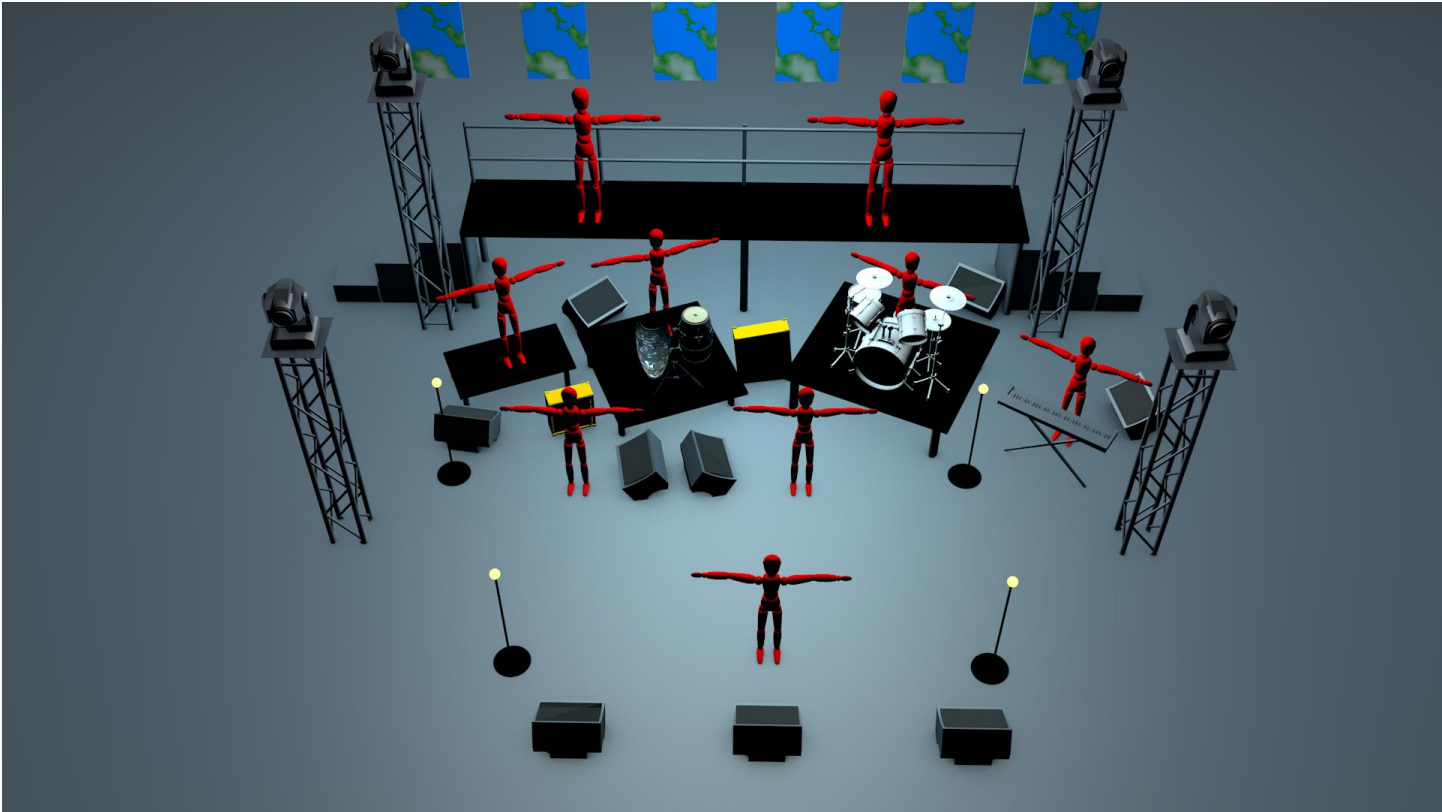
8:35pm: 8:50 finish with Encore

9:00pm Strike Load-out (approx. 2 hours) Flyman, Arbor Loader, 2 Hands, 2 Loaders (load out call) .

IV. INPUT LIST

Track 1	Kik in	B91/SM91	Track 20	BVG L	Pro D2
Track 2	Kik out	Audix D6 - short boom	Track 21	BVG R	
Track 3	Snare top	604	Track 22	Bass Voc	Sm 58 tall boom
Track 4	Snare bottom		Track 23	Rich Voc	B58 wireless tall straight
Track 5	HH	Sm 81 short boom	Track 24	Trumpet	Sm57/ 421 tall boom
Track 6	Rack 1	604	Track 25	Sax	421 tall boom
Track 7	Rack 2	604	Track 26	Bone	421 Tall boom
Track 8	Floor	604	Track 27	Bong Lo	sm57 tall boom
Track 9	Overhead SR	KSM-32 tall boom	Track 28	Bong Hi	sm 57 tall boom
Track 10	Overhead SL	KSM-32 tall boom	Track 29	Conga Lo	sm57 tall boom
Track 11	Bass Mic	421 short boom	Track 30	Conga Hi	sm57 tall boom
Track 12	Bass DI	JDI	Track 31	Toys	sm81 tall boom
Track 13	Gtr	609 / sm-87 short boom	Track 32		
Track 14	Key L	Pro D2	Track 33		
Track 15	Key R		Track 34		
Track 16	Key L	Pro D2	Track 35		
Track 17	Key R		Track 36	FOH	TB
Track 18	Trax L	Pro D2	Track 37	FM STAGE s shout	
Track 19	Trax R		Track 38		

V. STAGE PLOT



5.0 – INVISIBLE TOUCH - Stage Requirements:

5.1 - RISERS: 03 (three) PLATFORM Risers Carpeted in Black or Gray – Drum riser 8x8, keys riser 6x8 and horn riser is 6x8. **All 3 risers 48 inch in height if possible**

5.2 – BLACK BACKDROP: Please provide a BLACK BACKDROP.

5.3 - Stage Dimensions must be minimum of: 32ft. x 20ft

5.4 - Stage Minimum Height: 28 ft

5.5 - Backstage Area: 6 ft. - sides x 3ft- back

5.6 - Stage access must be from 2 staircases with handrails, one on each side of stage

5.7 - **Artist can bring IEM rig along with wedges necessary**

INVISIBLE TOUCH LIGHTING (Primary Lighting)

Invisible Touch brings (4) moving head lighting fixtures as well as (6) Flex LED screens Strips to be hung via fly bar. Total weight of screens is 487 lbs We.require only a lighting operator for the venue's fixed lighting

(2) Follow Spot DTS-1500 or equivalent (with (2) Operators) with intercom communication to our LD during show managing all cues

COMMENTS:

6.2 – IT travels with Moving heads lighting, Flex LED screen strips & operator

6.3 – Fixed Lighting equipment must be set up & in place prior to our arrival!!!!

6.4 Intercom system between all lighting stations (LD, Spots and dimmers) independent of the intercom used by sound tech s . The two systems should not interfere with each other and be on different channels

MONITOR

Artist travels with IEM monitor system and monitor console including 4 wedge monitors 1 down front covering front of stage 1 at the guitar station and 2 wedges at keyboard riser

CREW REQUIREMENTS

The following are our typical requirements . Our exact needs will be confirmed at time of advance phone call. For Show Load in & Strike: IN ADDITION WHEN PROVIDING RIDER COST ESTIMATE PLEASE QUOTE TECH STAFFING ON THE FOLLOWING :

(2) Loaders / Hands

(1) Flyman,

(1) Arbor Loader (required for adding LED panels to battens)

(1) Light Board Operator (for venue fixed lighting)

(2) follow spot operators

a) (1) designated technical director (the Venue must designate a technical director with decision-making authority to be present, responsible to and accessible for consultation with the Company at all crew calls)

b) Invisible touch show Load-in & set up normally takes about (2) hours, the performance lasts approximately one (90) minutes and strike normally takes 90- minutes and will begin immediately following the final performance

LOADING / ARRIVAL

Tour Coach / Or Van

For most shows, we require parking for 45 foot bus with Trailer. Trailer should be parked either on loading bay or in position for load in. Vehicles should be parked so they will not need to be moved until we call our bus

time. Please advise if 3 Phase shore power is available. Any gate codes/ contact numbers/ permits and maps should be forwarded with your advance. Our arrival will vary so please advise us what the earliest time we can arrive and be parked

MERCHANDISE

Should we opt to sell merch,we will provide a seller (two or more depending on house size) and require table space at the venue to sell and account for merchandise. We will either carry a quantity of merchandise, or arrange to have it shipped to the venue in advance.

This rider does not represent in totality the entire agreement between the parties but rather represents a tech rider and overview. At such time that Venue can provide confirmation of fulfilling requirements and a cost analysis, Presenter and venue can decide to move forward with a more binding agreement

UNDERSTOOD AND AGREED:

For the Presenter For Substantial Music Group

Richard Smith, Music & Booking Director

Name and Title Name and Title

Signature Signature

Date Date

Local Technical Representative

Name and Title Office phone

Signature Cell phone